



CAT[®]

SPRING/SUMMER 2012

A man with short dark hair and a beard is standing on a white plastic Adirondack-style chair. He is wearing a dark grey textured hoodie with a front pocket and blue denim jeans. He is looking off to the side. The background is a plain, light-colored wall with shadows cast on it.

CAT[®]

Men's



EXODUS



NEW COLORS



Tmoro Langrange
P714644

- Upper:** Pull Up Leather/Suede, Full Grain Leather/Suede, Full Grain Leather or Nappa
- Lining:** Recycled Nylon Mesh
- Sock Liner:** Links System
- Midsole:** EVA Heel Cushioning
- Outsole:** T933 iTechnology™
- Construction:** iTechnology™
- Available Sizes:** US 7-12, 13



Flagstone Lagrange
P714644



Star White
P713335



Beaned Trust Me
P713924

EXODUS HI



NEW COLORS



Beaned Trust Me
P713788

- Upper:** Full Grain Leather, Pull Up Leather/Suede, Full Grain Leather or Nappa/Full Grain Leather
- Lining:** Recycled Nylon Mesh
- Sock Liner:** Links System
- Midsole:** EVA Heel Cushioning
- Outsole:** T933 iTechnology™
- Construction:** iTechnology™
- Available Sizes:** US 7-12, 13



Flagstone Lagrange
P714647



Tmoro Langrange
P714646



SILO



NEW



- Upper:** Nappa or Full Grain Leather
- Lining:** Nylon Mesh
- Sock Liner:** Molded PU
- Midsole:** EVA Heel Cushioning
- Outsole:** T955 iTechnology™
- Construction:** iTechnology™
- Available Sizes:** US 7-12, 13



Star White
P713976



Black Happiness
P713547



Tmoro Chevre
P714344

SYNTAX



NEW



- Upper:** Nappa or Full Grain Leather
- Lining:** Nylon Mesh
- Sock Liner:** Molded PU
- Midsole:** EVA Heel Cushioning
- Outsole:** T955 iTechnology™
- Construction:** iTechnology™
- Available Sizes:** US 7-12, 13



BlackPull Up Kola/Pepper Mesh/Shag
P714728



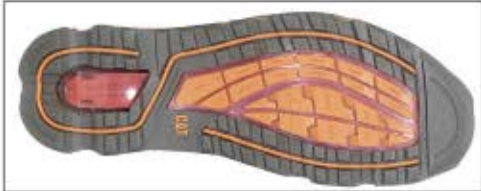
Ebony Pull Up Kola/
Espresso Shag/Mesh
P714729



SYNTAX MID



- Upper:** Nappa or Full Grain Leather
- Lining:** Nylon Mesh
- Sock Liner:** Molded PU
- Midsole:** EVA Heel Cushioning
- Outsole:** T955 iTechnology™
- Construction:** iTechnology™
- Available Sizes:** US 7-12, 13



Chocolate Dependable
P714732



Black Big Horn
P714733



Honey Dependable
P714734



ACTIVE EQUIPMENT

TURAN



- Upper:** Suede or Full Grain Leather
- Lining:** Nylon Mesh
- Sock Liner:** Removable EVA
- Midsole:** Molded EVA
- Outsole:** T908 Molded Rubber
- Construction:** Strobel
- Available Sizes:** US 7-12, 13



Beaned Trust Me
P712248



Nutmeg Uniformity
P714317



Blackout Answer Me
P712250

VERSA



- Upper:** Suede, Full Grain Leather/
Wolverine® Performance
Leather, Wolverine®
Performance Leather/Mesh
or Nappa/Mesh
- Lining:** Nylon Mesh
- Sock Liner:** Removable EVA
- Midsole:** Molded EVA
- Outsole:** T908 Molded Rubber
- Construction:** Strobel
- Available Sizes:** US 7-12, 13



Soft Grey Answer Me/Full Moon Shag
P712245



Black
P712247



Nutmeg Uniformity/Mesh
P714316



White
P714612



ACTIVE EQUIPMENT

DESCEND



White Grey Yellow
P715138



Black Tirrenian/Mesh
P714911

- Upper: PU Nubuck/Mesh or PU Nubuck/Mesh/PU
- Lining: Nylon Mesh
- Sock Liner: Molded EVA
- Midsole: Molded EVA
- Outsole: T908 Molded Rubber
- Construction: Strobel
- Available Sizes: US 7-12, 13



JENSEN



Honey Dependable
P712231



Classic Taupe
P713918

- Upper: Nubuck or Oiled Nubuck
- Lining: Nylon Mesh
- Sock Liner: Removable EVA
- Midsole: Molded EVA (Hidden)
- Outsole: T824 Molded Rubber
- Construction: Strobel
- Available Sizes: US 7-12, 13





ACTIVE EQUIPMENT

VIDA



NEW COLORS

- Upper:** Nubuck, Full Grain Leather or Tumbled Nubuck
- Lining:** Nylon Mesh
- Sock Liner:** Removable EVA
- Midsole:** Molded EVA (Hidden)
- Outsole:** T824 Molded Rubber
- Construction:** Strobel
- Available Sizes:** US 7-12, 13



Soft Grey Dependable
P713769



Honey Naturebuck
P711331



Dark Beige Lite Horn
P714308

CERTUS HI



- Upper:** Full Grain Leather, Oiled Nubuck, Pull Up Leather or Nubuck
- Lining:** Nylon Mesh
- Sock Liner:** Removable EVA
- Midsole:** Molded EVA (Hidden)
- Outsole:** T824 Molded Rubber
- Construction:** Strobel
- Available Sizes:** US 7-12, 13



Weaned Trust Me
P712334



Honey Dependable
P710268



Dark Beige Lite Horn
P710267



Tmorw
P715159



ACTIVE EQUIPMENT

SHELK HI



NEW COLORS

Star White
P713361

- Upper:** Tumbled Nubuck, Pull Up Leather, or Full Grain Leather
- Lining:** Nylon Mesh
- Sock Liner:** Removable EVA
- Midsole:** Molded EVA (Hidden)
- Outsole:** T785 Molded EVA
- Construction:** Cement
- Available Sizes:** US 7-12, 13



Black Bpony
P709708



Rope Bpony
P709709



Beaned
P710367



Tyre Answer Me
P714689

SHELK



NEW COLORS

Black Bpony
P709712

- Upper:** Full Grain Leather, Tumbled Nubuck, Tumbled Full Grain Leather, Pull Up Leather or Nappa
- Lining:** Nylon Mesh
- Sock Liner:** Removable EVA
- Midsole:** Molded EVA (Hidden)
- Outsole:** T785 Rubber
- Construction:** Cement
- Available Sizes:** US 7-12, 13



Rope Bpony
P709713



Soft Grey Answer Me
P714688



ACTIVE EQUIPMENT

LITZ MID



Black Comfort
P712217

- Upper:** Oiled Nubuck, Full Grain Leather or Tumbled Full Grain Leather
- Lining:** Nylon Mesh
- Sock Liner:** Removable EVA
- Midsole:** Molded EVA (Hidden)
- Outsole:** T785 Rubber
- Construction:** Cement
- Available Sizes:** US 7-12, 13



Muddy Tasty
P712219



Deep Chestnut Naturebear
P714262



Sand Dollar Naturebear
P714261

CONTEXT HI



Nutmeg
P712023

- Upper:** Full Grain Leather, Nappa/ Wolverine® Performance Leather or Full Grain Leather/ Wolverine® Performance Leather
- Lining:** Nylon Mesh
- Sock Liner:** Removable EVA
- Midsole:** Molded EVA (Hidden)
- Outsole:** T785 Rubber
- Construction:** Cement
- Available Sizes:** US 7-12, 13



Muddy
P712024



Black / Orange
P712117



Soft Grey
P713998



ACTIVE EQUIPMENT

ACTIVE ALASKA

- Upper:** Oiled Nubuck or Nubuck
- Lining:** Nylon Mesh
- Sock Liner:** Nylon Mesh
- Midsole:** Molded EVA
- Outsole:** T506 Molded Rubber
- Construction:** Cement
- Available Sizes:** US 7-12, 13



Classic Taupe Frontier
P712283



Honey Dependable
P703318



Dark Beige Lite Horn
P708972

PRECISE



- Upper:** Nappa/Mesh/Micro Fiber PU
Nubuck/Mesh/Micro Fiber or
PU Nubuck/Mesh/Suede
- Lining:** Nylon Mesh
- Sock Liner:** Molded EVA
- Midsole:** Molded EVA
- Outsole:** T1003 Molded Rubber
- Construction:** Strobel
- Available Sizes:** US 7-12, 13



White Game On/Pod Grey Mesh/Nx Buck
P714894



Black Game On/
Mesh/Nx
P714895



ACTIVE EQUIPMENT

NEDER

NEW COLORS



Worn Brown Happiness
P714319

- Upper:** Nappa or Nappa/Suede
- Lining:** Nylon Mesh
- Sock Liner:** Removable EVA
- Outsole:** T811 Rubber
- Construction:** Vulcanized
- Available Sizes:** US 7-12, 13



Star White/Midnight
P713028

FRAME



Star White Semi Full Grain Leather/Canvas
P710951

- Upper:** Full Grain Leather, Wolverine® Performance Leather/Canvas or Semi Full Grain Leather/Canvas
- Lining:** Nylon Mesh
- Sock Liner:** Removable EVA
- Midsole:** Molded EVA
- Outsole:** T862 Molded Rubber
- Construction:** Strobel +Cement
- Available Sizes:** US 7-12, 13



Peat
P714003



Black
P710948



ACTIVE EQUIPMENT

ACCESS



White Grey Yellow
P715137

- Upper: Micro Fiber/Mesh or PU
Nubuck/Mesh
- Lining: Nylon Mesh
- Sock Liner: Molded EVA
- Midsole: Molded EVA
- Outsole: T862 Molded Rubber
- Construction: Strobel +Cement
- Available Sizes: US 7-12, 13



METEOR



Dark Brown Big Horn
P708673

- Upper: Pull Up Leather
- Lining: Nylon Mesh
- Sock Liner: Poliyou®
- Midsole: Molded EVA
- Outsole: T758 Molded Rubber
- Construction: Strobel
- Available Sizes: US 7-12, 13





ACTIVE EQUIPMENT

TRACER HI



NEW COLORS

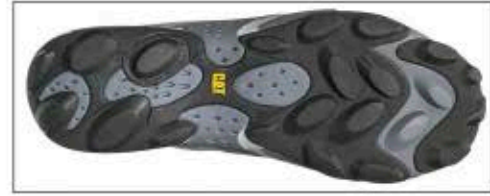


Pepper Shag/Mesh
P710248



Soft Grey
P710279

- Upper:** Suede or Wolverine® Performance Leather/Mesh
- Lining:** Nylon Mesh
- Sock Liner:** Removable EVA
- Midsole:** Molded EVA
- Outsole:** T833 Molded Rubber
- Construction:** Strobel
- Available Sizes:** US 7-12, 13



MOMENTUM



- Upper:** Action Leather/Mesh or Wolverine® Performance Leather/Mesh
- Lining:** Nylon Mesh
- Sock Liner:** Molded EVA
- Midsole:** Molded EVA
- Outsole:** T833 Molded Rubber
- Construction:** Strobel
- Available Sizes:** US 7-12, 13



Star White Carnation/Mesh
P714907



Black Carnation/
Mesh
P714908



Tyre Shag/
Mesh
P714909



Soft Grey Shag/
Mesh
P714910



ACTIVE EQUIPMENT

SCAZED



Upper: Suede/PU Coated Leather/
Mesh

Lining: Nylon Mesh

Sock Liner: Molded EVA

Midsole: Molded EVA

Outsole: T833 Molded Rubber

Construction: Strobel

Available Sizes: US 7-12, 13



New Moon/Mesh Shelter/
Gunsmoke
P713515



New Moon/Mesh Smoke/
Pod Grey
P713517

TRACER



Upper: Suede PU Coated Leather/
Mesh or Wolverine®
Performance Leather/Mesh

Lining: Nylon Mesh

Sock Liner: Molded EVA

Midsole: Molded EVA

Outsole: T833 Molded Rubber

Construction: Strobel

Available Sizes: US 7-12, 13



Soft Grey Shag/Mesh
P710245



ACTIVE EQUIPMENT

GLYCO

Upper: Full Grain Leather
Lining: Nylon Mesh
Sock Liner: Molded PU
Midsole: Molded TPU
Outsole: T1004 Molded Rubber
Construction: Cement + Strobel
Available Sizes: US 7-12, 13



Black Buffalo Tiger
P714891



Dark Brown Buffalo Tiger
P714892



Dark Beige Buffalo Tiger
P714893

GLYCO MID

Upper: Full Grain Leather
Lining: Nylon Mesh
Sock Liner: Molded PU
Midsole: Molded TPU
Outsole: T1004 Molded Rubber
Construction: Cement + Strobel
Available Sizes: US 7-12, 13



Dark Beige Buffalo Tiger
P714890



Black Buffalo Tiger
P714888



Dark Brown Buffalo Tiger
P714889



ACTIVE EQUIPMENT

MERIT

Upper: PU Split Leather/Suede
Lining: Nylon Mesh
Sock Liner: Removable EVA
Outsole: T977 Molded Rubber
Construction: Strobel + Cement
Available Sizes: US 7-12, 13



Espresso Solomon/New Moon
P714960

MERIT MID

Upper: PU Split Leather/Suede
Lining: Nylon Mesh
Sock Liner: Removable EVA
Outsole: T977 Molded Rubber
Construction: Strobel + Cement
Available Sizes: US 7-12, 13



Espresso Solomon/New Moon
P714962



ACTIVE EQUIPMENT

LIZT

Upper: Tumbled Nubuck, Nappa or Full Grain Leather
Lining: Nylon Mesh
Sock Liner: Removable EVA
Midsole: Molded EVA (Hidden)
Outsole: T785 Rubber
Construction: Strobel
Available Sizes: US 7-12, 13



Nutmeg Uniformity
P712218

VIDA

Upper: Pull Up Leather, Nubuck, Full Grain Leather or Tumbled Nubuck
Lining: Nylon Mesh
Sock Liner: Removable EVA
Midsole: Molded EVA (Hidden)
Outsole: T824 Molded Rubber
Construction: Strobel
Available Sizes: US 7-12, 13



Dark Beige Lite Horn
P714308



ACTIVE EQUIPMENT

CONTEXT



Blackout Comfor/Shag
P711615

Upper: Full Grain Leather/
Suede, Nappa/Wolverine®
Performance Leather or Full
Grain Leather/Wolverine®
Performance Leather

Lining: Nylon Mesh

Sock Liner: Removable EVA

Midsole: Molded EVA (Hidden)

Outsole: T785 Rubber

Construction: Cement

Available Sizes: US 7-12, 13



CONTEXT HI



Blackout Indulge
P713047

Upper: Full Grain Leather, Nappa or
Nubuck

Lining: Nylon Mesh

Sock Liner: Removable EVA

Midsole: Molded EVA (Hidden)

Outsole: T785 Rubber

Construction: Cement

Available Sizes: US 7-12, 13





ACTIVE EQUIPMENT

RATIFY

- Upper: Full Grain Leather/Suede or Pull Up Leather
- Lining: Nylon Mesh
- Sock Liner: Removable EVA
- Midsole: Molded EVA
- Outsole: T978 Molded Rubber
- Construction: Strobel
- Available Sizes: US 7-12, 13



Beaned Trust Mer/Suede
P714938



Black Big Horn
P714940



Tmoro Langrange/Suede
P714941

HELIO

- Upper: PU Split Leather
- Liner: Antibacterial Micro Fiber
- Sock Liner: Molded EVA
- Outsole: T950 Molded Rubber
- Construction: Cement
- Available Sizes: US 7-12, 13
Whole Sizes Only



Dark Beige Cow Lamper
P714852



Black Cow Lamper
P714850



Coffee Been Cow Lamper
P714851



ACTIVE EQUIPMENT

INTAR

NEW COLORS

Upper: Oiled Suede, Suede or Nappa
Lining: Canvas
Sock Liner: Removable EVA
Outsole: T916 Rubber
Construction: Vulcanized
Available Sizes: US 7-12, 13



Old Boue Tuman
P714694



Olive Drab Tuman
P714695

A woman with voluminous, curly brown hair is sitting on a concrete ledge with a blue-painted top edge. She is wearing a light-colored, sleeveless top and white shorts. Her feet are wearing light blue and grey sneakers. She is looking upwards and to the right. The background is a bright, hazy sky.

Cat[®]

WOMEN'S

FOOTWEAR COLLECTION



WOMEN'S ACTIVE EQUIPMENT

ZANDRA

- Upper: Suede/Wolverine® Performance Leather or Nappa/Action Leather
- Lining: Canvas
- Sock Liner: Die Cut EVA + Latex Heel
- Outsole: T1016 Molded Rubber
- Construction: Strobel + Cement
- Available Sizes: US 5-10



White Game On/Carnation
P305417



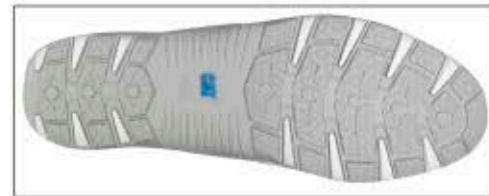
Black Game On/
Carnation
P305416



Pewter Vintage Suede/
Pewter Shag
P305419

IZZY MID

- Upper: Full Grain Leather/Suede
- Lining: Nylon Mesh
- Sock Liner: Removable EVA
- Outsole: T964 Molded Rubber
- Construction: Cement
- Available Sizes: US 5-10



Black Conspiracy/Moon
P304887



Whitecap Conspiracy/
Moon
P304888



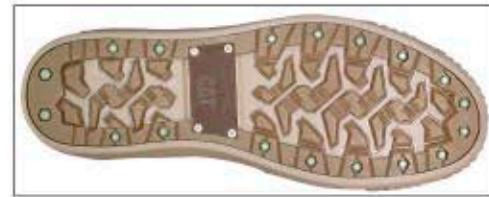
Coffee Conspiracy/Tyre
Moon
P304889



WOMEN'S ACTIVE EQUIPMENT

JERET MID

Upper: Full Grain Leather
 Lining: Canvas
 Sock Liner: Removable EVA
 Outsole: T961 Molded Rubber
 Construction: Strobel
 Available Sizes: US 5-10



Tan Edgy Veggie
 P305443



Peat Edgy Veggie
 P305442



Soft Edgy Veggie
 P305444

JERET

Upper: Full Grain Leather
 Lining: Canvas
 Sock Liner: Removable EVA
 Outsole: T961 Molded Rubber
 Construction: Strobel
 Available Sizes: US 5-10



Peat Edgy Veggie
 P305444



Tan Edgy Veggie
 P305444



Soft Edgy Veggie
 P305444

© 2011 Caterpillar Inc. All rights reserved. CAT is a registered trademark of Caterpillar Inc. in the U.S. and other countries. CAT is a registered trademark of Caterpillar Inc. in the U.S. and other countries. CAT is a registered trademark of Caterpillar Inc. in the U.S. and other countries.



INDUSTRIAL EQUIPMENT





SALVO 6" WATERPROOF STEEL TOE



Honey
P709511



Black
P89782



Dark Brown
P89783

Upper: Oiled Full Grain Leather, Full Grain Leather or Pull Up Leather

Lining: Canvas/Suede

Sock Liner: PU

Midsole: Rubber

Outsole: T742 Rubber

Construction: SuperWelt

Available Sizes: US 7-12, 13, 14



Slip (Dry)	★★★★	Water	★★★★★
Slip (Wet)	★★★	Heat	★★★★★
Oil	★★★★★	Abrasion	★★★★★

Final de Junio 2011

Suggested Occupations: Light Industrial	Suggested Industries: Airport Distribution General Laborers Lawn/Landscaping Manufacturing Mechanic/Auto Works Tradesman Warehousing
---	---

HOLTON STEEL TOE



Moondance
P708277



Black Cremos
P89704



Honey Dependable
P708279

Upper: Oiled Full Grain Leather, Full Grain Leather or Pull Up Leather

Lining: Canvas/Suede

Sock Liner: PU

Midsole: Rubber

Outsole: T742 Rubber

Construction: SuperWelt

Available Sizes: US 7-12, 13, 14



Slip (Dry)	★★★★	Water	★★★★★
Slip (Wet)	★★★	Heat	★★★★★
Oil	★★★★★	Abrasion	★★★★★

Final de Junio 2011

Suggested Occupations: Light Industrial	Suggested Industries: Airport Distribution General Laborers Electrical Works Lawn/Landscaping Manufacturing Mechanic/Auto Works Tradesman Warehousing
---	---



ARGON COMPOSITE TOE



Upper: Full Grain Leather or Pull Up Leather
Lining: Nylon Mesh
Sock Liner: Removable EVA
Midsole: PU Mold
Outsole: T901 PVC
Construction: Strobel + Cement
Available Sizes: US 7-12, 13



Slip (Dry)	★★★★★	Water	★★★
Slip (Wet)	★★★★★	Heat	★★★★★
Oil	★★★★★	Abrasion	★★★★★

Final de Junio 2011

Suggested Occupations: Light Industrial	Suggested Industries: Airport Distribution General Laborers Electrical Works Lawn/Landscaping Manufacturing Mechanic/Auto Works Tradesman Warehousing
---	---



Dark Brown
P712530



Black Credos
P712528

NITROGEN COMPOSITE TOE



Upper: Full Grain Leather, Pull Up Leather, Nubuck or Oiled Nubuck
Lining: Nylon Mesh
Sock Liner: Removable EVA
Midsole: PU Mold
Outsole: T901 PVC
Construction: Strobel + Cement
Available Sizes: US 7-12, 13



Slip (Dry)	★★★★★	Water	★★★
Slip (Wet)	★★★★★	Heat	★★★★★
Oil	★★★★★	Abrasion	★★★★★

Final de Junio 2011

Suggested Occupations: Light Industrial	Suggested Industries: Airport Distribution General Laborers Electrical Works Lawn/Landscaping Manufacturing Mechanic/Auto Works Tradesman Warehousing
---	---



Dark Beige Lite Horn
P712538



Black Credos
P712357



GENERATOR 6" STEEL TOE



FLEXION



Black
P89984



Dark Brown
P89983



Honey
P713212

- Upper:** Full Grain Leather, Pull Up Leather or Nubuck
- Lining:** Nylon Mesh
- Sock Liner:** Removable EVA
- Midsole:** PU Mold
- Outsole:** T900 Rubber
- Construction:** Flexion Engineered
- Available Sizes:** US 7-12, 13, 14



Slip (Dry)	★★★★	Water	★★★★
Slip (Wet)	★★★★★	Heat	★★★★★
Oil	★★★★★	Abrasion	★★★

Final de Junio 2011

Suggested Occupations: Light Industrial	Suggested Industries: Airport Distribution General Laborers Electrical Works Lawn/Landscaping Manufacturing Mechanic/Auto Works Tradesman Warehousing
---	---



MANIFOLD 6" WATERPROOF TOUGH STEEL TOE



Black Excredos
P89980 P713205

- Upper:** Waterproof Full Grain Leather or Waterproof Tumbled Full Grain Leather
- Lining:** Nylon Mesh
- Sock Liner:** Removable EVA
- Midsole:** PU Mold
- Outsole:** T900 Rubber
- Construction:** Flexion Engineered
- Available Sizes:** US 7-12, 13, 14



Slip (Dry)	★★★★	Water	★★★★
Slip (Wet)	★★★★★	Heat	★★★★★
Oil	★★★★★	Abrasion	★★★

Final de Junio 2011

Suggested Occupations: Light Industrial	Suggested Industries: Airport Distribution General Laborers Electrical Works Lawn/Landscaping Manufacturing Mechanic/Auto Works Tradesman Warehousing
---	---

LYTTON MID STEEL TOE



Dark Brown Big Horn
P90082

- Upper:** Pull Up Leather
- Lining:** Nylon Mesh
- Sock Liner:** Removable EVA
- Midsole:** PU Mold
- Outsole:** T900 Rubber
- Construction:** Flexion Engineered
- Available Sizes:** US 7-12, 13



Slip (Dry)	★★★★	Water	★★★★
Slip (Wet)	★★★★★	Heat	★★★★★
Oil	★★★★★	Abrasion	★★★

Final de Junio 2011

Suggested Occupations: Light Industrial	Suggested Industries: Airport Distribution General Laborers Electrical Works Lawn/Landscaping Manufacturing Mechanic/Auto Works Tradesman Warehousing
---	---

